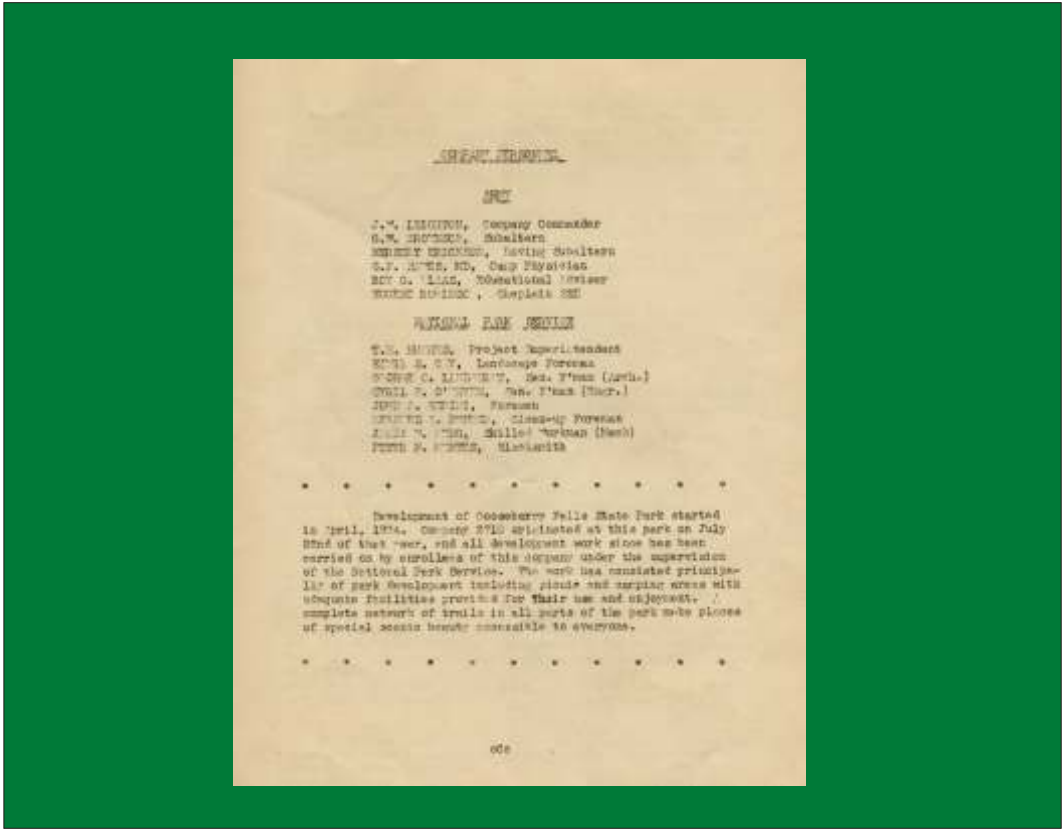


Development of Gooseberry Falls State Park started in May 1934, by enrollees of the Civilian Conservation Corp (CCC)



under the supervision of the National Park Service.



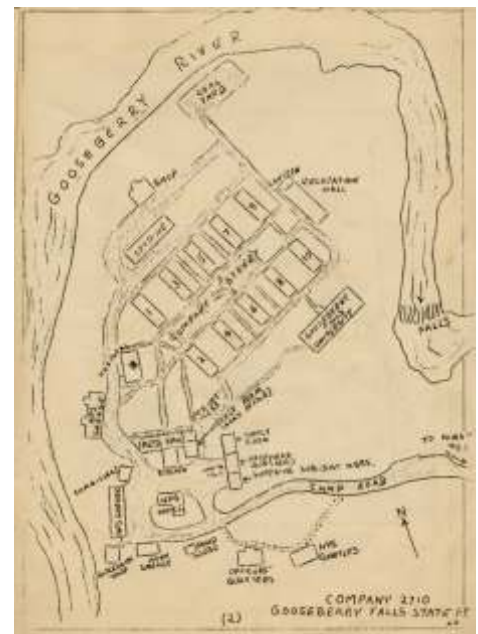
Imagine. As many as 200 young men at a time were living in a camp



just behind the Upper Falls. A typical CCC Camp had 10 army style barracks,



"Boys of Barrack #3"



CCC Camp #2710 map





an infirmary (hospital), latrine (camp bathroom),



"Ready to ring the dinner bell"



mess hall (lunch room), recreation hall,



various service and administrative buildings, and officers' quarters.



The Camp even had an education building called "Gooseberry Falls University."



Large scale construction & development by the "CCC boys" began in 1935. By 1936 the park was "considered one of the more fully equipped in the state."



There was a hustling, bustling of activity as the "boys" built



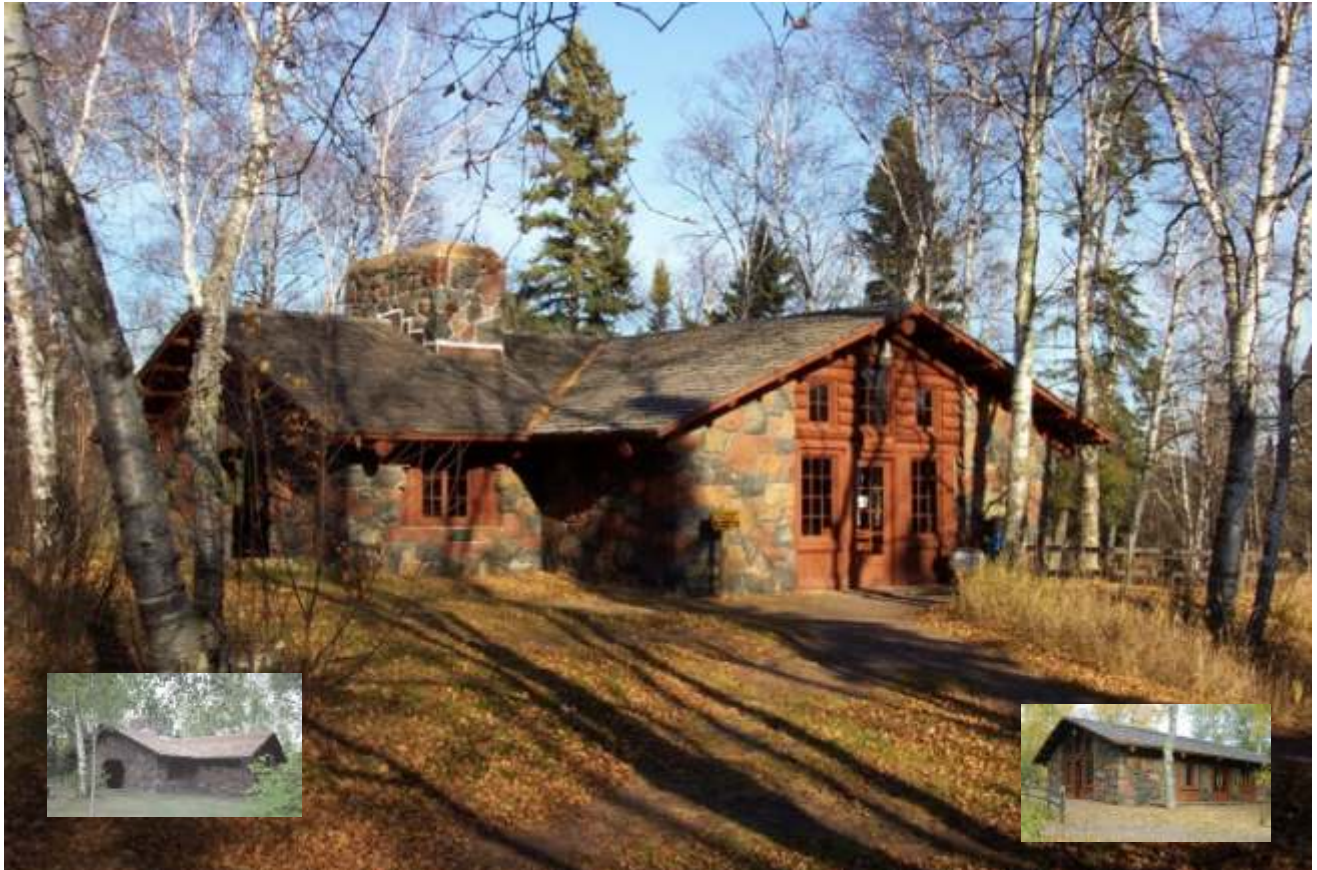


roads, trails, the campground with water & sewer lines, and



many stone and log structures throughout the park.

Today, over 80 CCC buildings, structures, and objects are found within the Gooseberry Falls State Park National Register of Historic Places historic district.



Lady Slipper Lodge (1935) Cost: \$2,049.72 3,228 Man Days

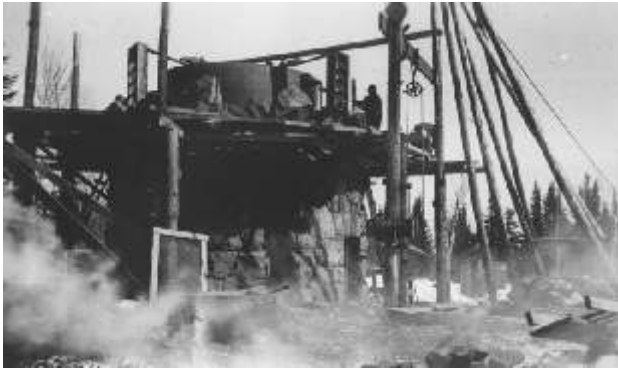




Lakeview Shelter



Lakeview Shelter (1936) Cost: \$2,049.72 3,874 Man Days



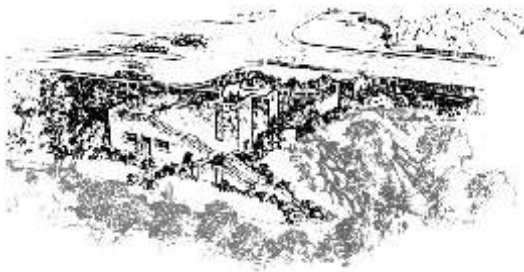
Water Tower (1936)



Campground Shelter (1938)

Cost: \$4,350.32 6,946 Man Days





"Castle in the Park" concourse (1936-1940)



Falls View Shelter (1939) Cost: \$4,386.44 5,300 Man Days





Guard Rail (1939), fireplaces, picnic tables, & benches.



Latrine (1935)

Cost: \$216.08 2,225 Man Days



Ice House (1941)

Cost: \$240.00 547 Man Days



Fire fighting

The "CCC Boys" also helped in the community when needed.

Emergency CCC Camp #1720 was at Gooseberry from  
May to October 1934.

CCC Camp #2710 was here from July 1934 until it was terminated  
in May 1941. It remained in operation longer than any other  
Minnesota state park CCC camp.

After the camp closed a local newspaper wrote,

*"Here lies a state park that will live in the years to come  
as a tribute to the nation's Civilian Conservation Corps  
and a monument to Company 2710,  
its officers, and its boys."*



We'd like to thank the following  
for providing images:

Maynard Antilla  
Marvin Erickson  
Robert Hauge  
Thomas Hughes  
Ed Kane  
Bert Keller  
John Lunseth  
M. Midal  
Palmer Nelson  
Cyril O'Bryen  
Bernard Penner  
Don Price  
Chuck Schaffer  
Paul Sundberg  
R. Wagner  
Ted Wahlberg  
Wesley W.  
Ralph Welton  
Iron Range Research Center  
Minnesota Historical Society